

CUSTOMER FIRST

A new number for you if you have a learning disability or care for someone who does

You can call Customer First to get help from Suffolk County Council



0808 800 4003

Lines open 8:45am to 5:00pm Monday to Thursday
8:45am to 4:20pm Friday

**Free
Phone***

Call us about
any social
services
questions

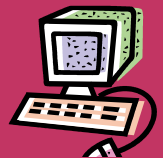
You can speak
to someone
who knows how
to help you



Email: customer.first@socserv.suffolkcc.gov.uk

Website: www.suffolk.gov.uk/careandhealth

Write: P.O. Box 771, Needham Market IP6 8WB



*All calls are free from landlines and most major mobile phone networks.