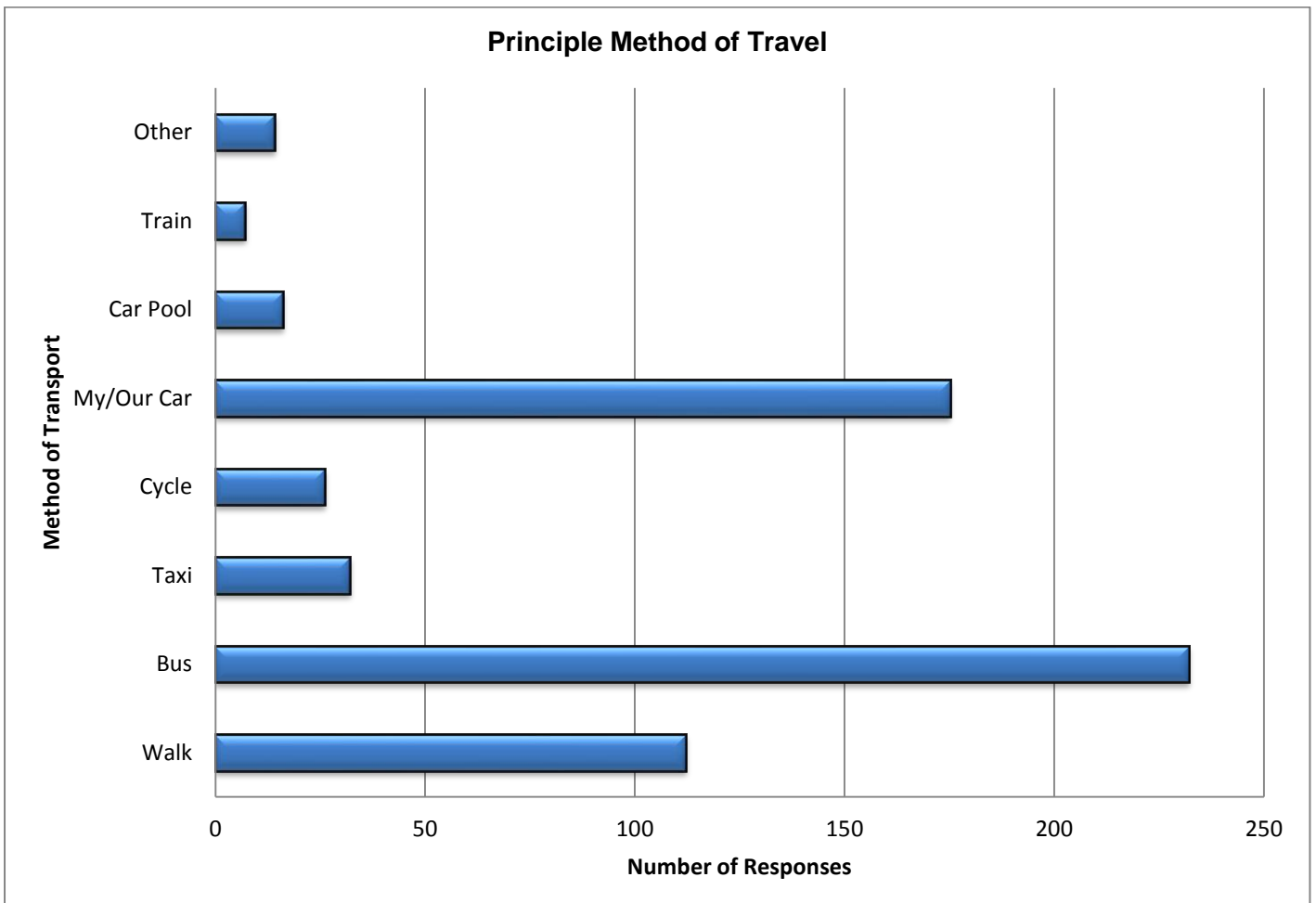
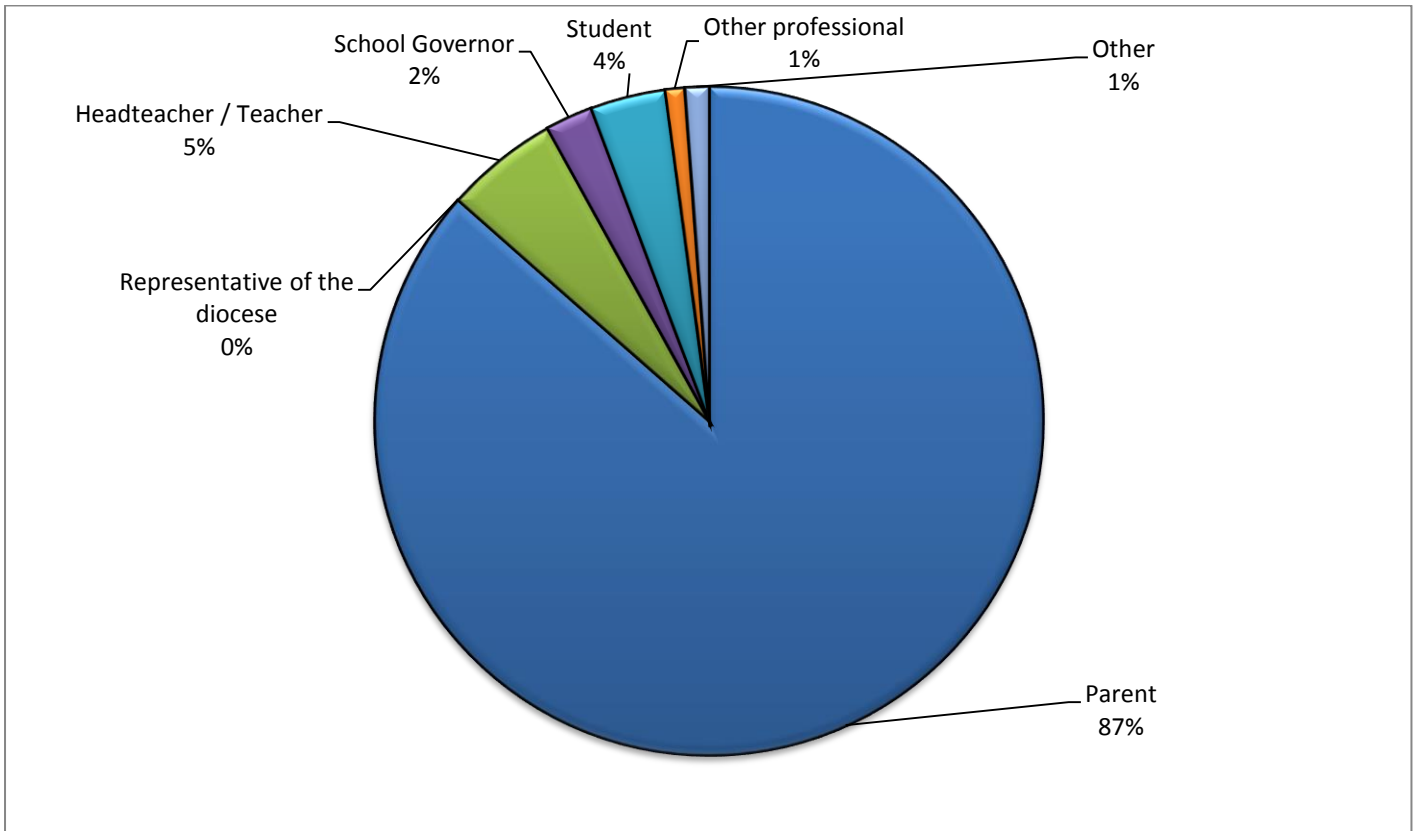
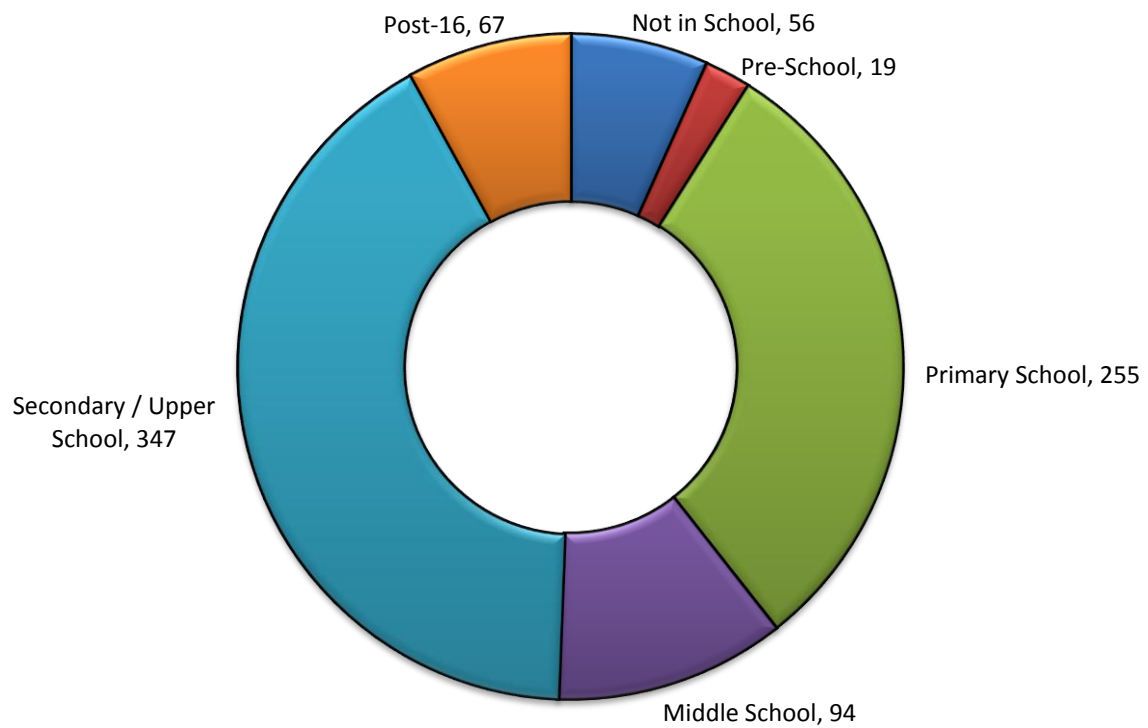


**HOME TO SCHOOL TRAVEL CONSULTATION QUESTIONNAIRE**

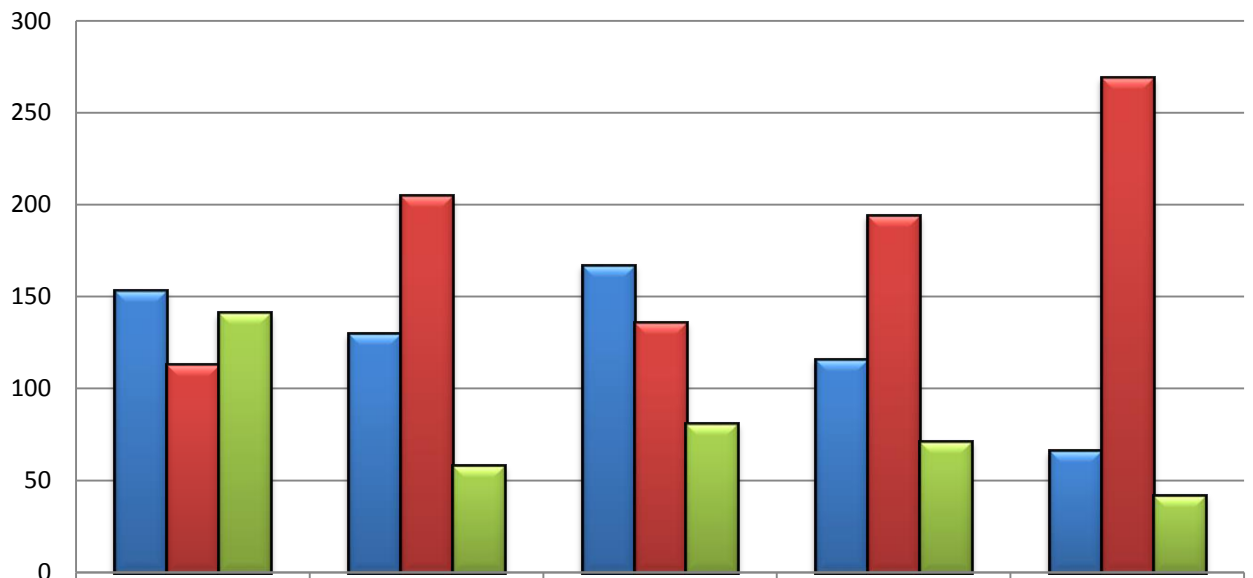
**QUANTITATIVE ANALYSIS**



**Number of Children Identified by Respondents**



**Responses to Individual Questions**



	"Transport Priority Area" vs. "Catchment Area"	Increase the charge for discretionary transport by £10 per term, i.e. £30 per year?	Phase out exemptions for those on a low income from September 2015 as they are covered under additional statutory entitlements?	Phase out exemption for third and subsequent children from September 2015?	Restrict support with travel for post-16 students to their nearest school or post-16 provider unless they are studying a specialist course?
Agree	153	130	167	116	66
Disagree	113	205	136	194	269
Don't Know	141	58	81	71	42